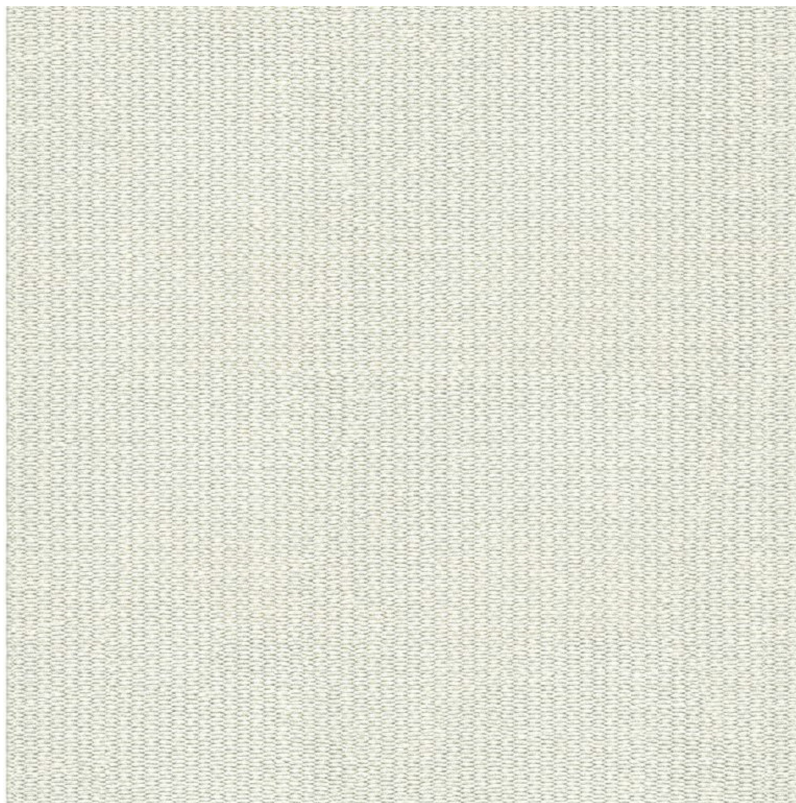


S U T H E R L A N D



**2021 B Fall: Vincent Van
Duysen**

Tartan Rope Flatwoven

FW243-270

DETAILS & SPECS

| | |
|--------------|------------------------------------|
| Designer | Vincent Van Duysen |
| Construction | Flatwoven |
| Colorway | White Sands |
| Collection | 2021 B Fall: Vincent van Duysen |

DESCRIPTION

Tartan brings depth, texture, and a profound presence to any room. Tartan is woven with Perennials ropes in both the warp and the weft creating a stunning checkered design and making this our thickest flat weave to date.