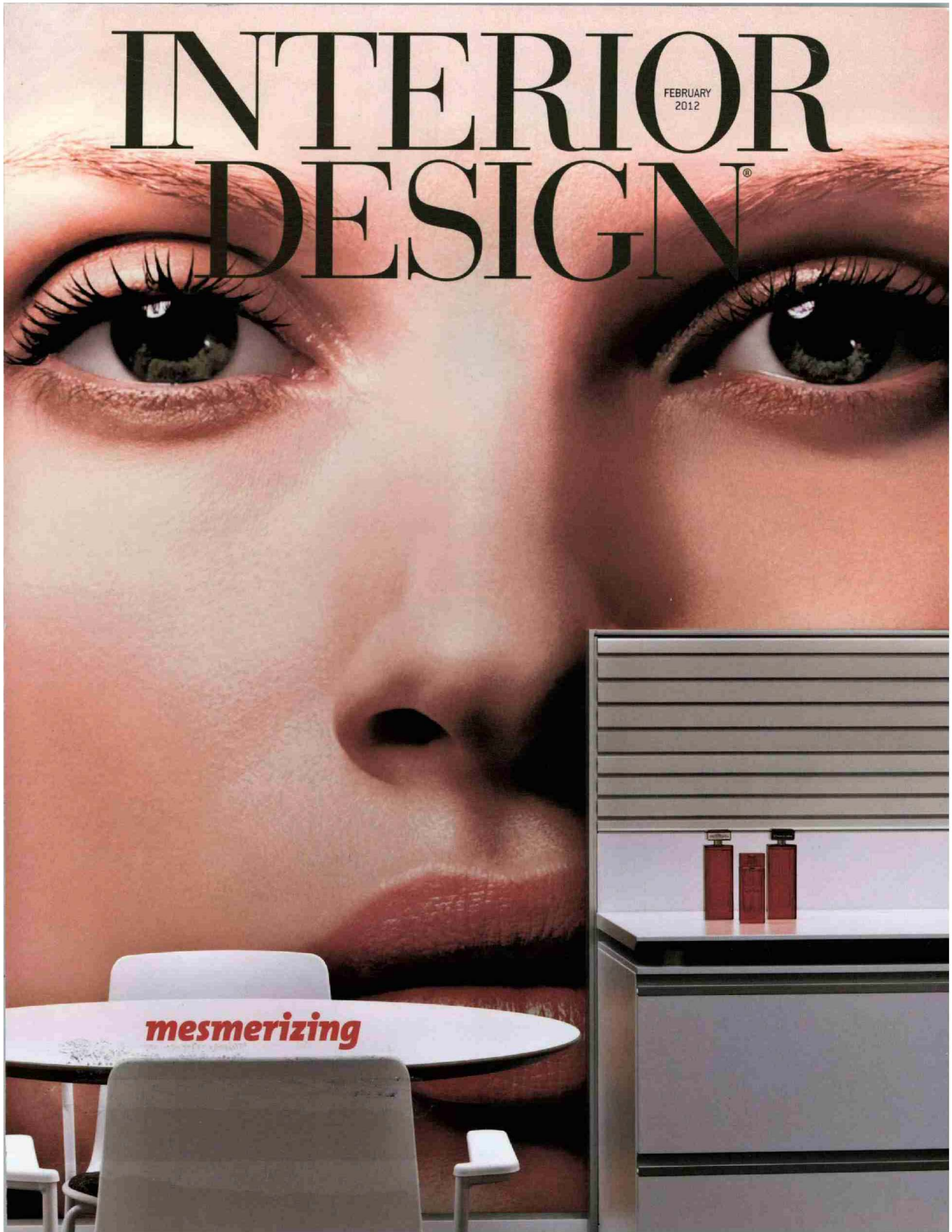


INTERIOR DESIGN[®]

FEBRUARY
2012

mesmerizing





Sutherland

Working from finished pieces and in some cases molds, this company has launched the John Dickinson collection in tribute to a San Francisco legend whose sculpturally exotic furnishings still have passionate adherents nearly 30 years after his death. Some of the 11 estate-authorized limited-edition reproductions are strictly for indoors, for example a resin lamp topped by an aluminum dome with brass trim. But the majority are appropriate en plein air, molded from glass-reinforced concrete painted a precipitation-resistant matte white.

The elegantly rugged Tree Stump pedestal is accompanied by tables bearing witness to Dickinson's famous fixation on beastly feet. Three favorites are Etruscan, Hoofed, and Six-Legged African. 214-638-4161; sutherlandfurniture.com. **circle 404**

