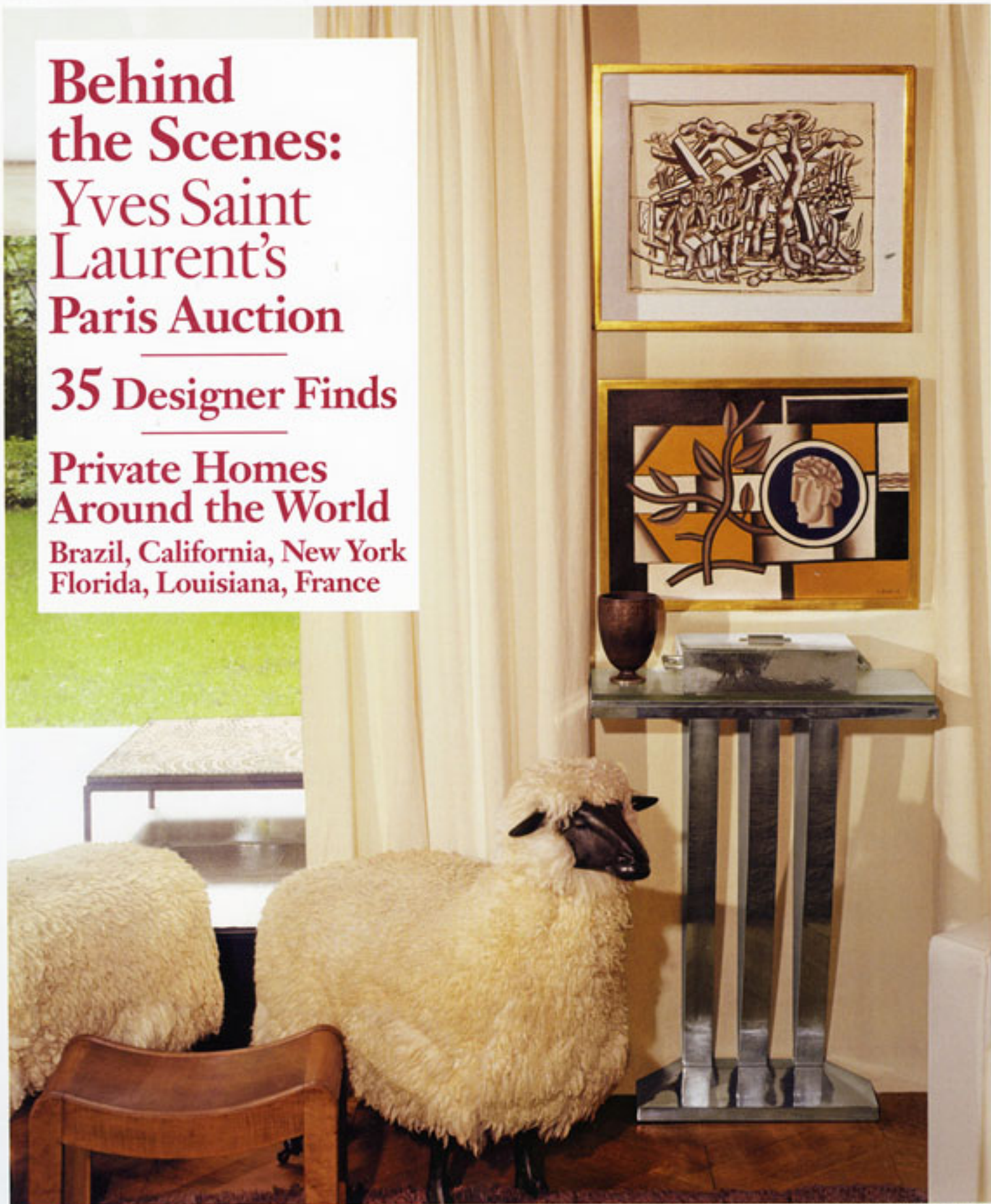


## Behind the Scenes: Yves Saint Laurent's Paris Auction

### 35 Designer Finds

### Private Homes Around the World

Brazil, California, New York  
Florida, Louisiana, France





The couple had been looking for a property on the bays, but after the wife saw “of all things, the movie *Something’s Gotta Give*,” which featured an oceanfront house, she told her husband, “We should be looking on the beach.” No sooner said than found: an 8,000-square-foot Shingle Style house in Southampton on four effulgent acres facing the sea.

Built in 1990, the house was angled to make the most of the views: south to the illimitable Atlantic and north to classic pastoral (ponds and plowed fields). Its distinctive style of utterance includes conical roofs and multiple gables, which, choppy as they are, charmingly evoke whitecaps. The architect, Eric Woodward, kept the reins on the building—it ambles not in a languorous but in a controlled way, with all its elements interlocking.

“It’s an upside-down house,” the wife points out. Meaning that four bedrooms, a gym and a wine room are on the dune-hugging lower level, while the living room, kitchen/family room, dining room and library, as well as the master suite, hover luminously above. “The house sets up very well for our fam-

# Moody Hues for the Hamptons

A HOUSE EVOKES THE CALM BEFORE THE STORM

Architecture by Eric Woodward, AIA/Interior Design by Thad Hayes

Text by Steven M. L. Aronson/Photography by Scott Frances



