

# contract

inspiring commercial design solutions june 2009



CitizenM Amsterdam City Centre by  
Concrete Architectural Associates

**Community**

Alameda Theater by  
Architectural Resources Group  
Stacking Chairs  
Firm Ownership

## Tuohy

Space No. 1159

Tuohy's Kaesi collection by Christian Arnold and Niel Sommers of Clockwork, a Chicago-based interiors firm, is meant to replace more formal pull-up seating configurations.

It consists of a lounge chair with metal legs, a swivel-based version, a round side table, a series of low tables with storage, end tables, and credenzas.

[www.tuohyfurniture.com](http://www.tuohyfurniture.com) Reader Service No. 232



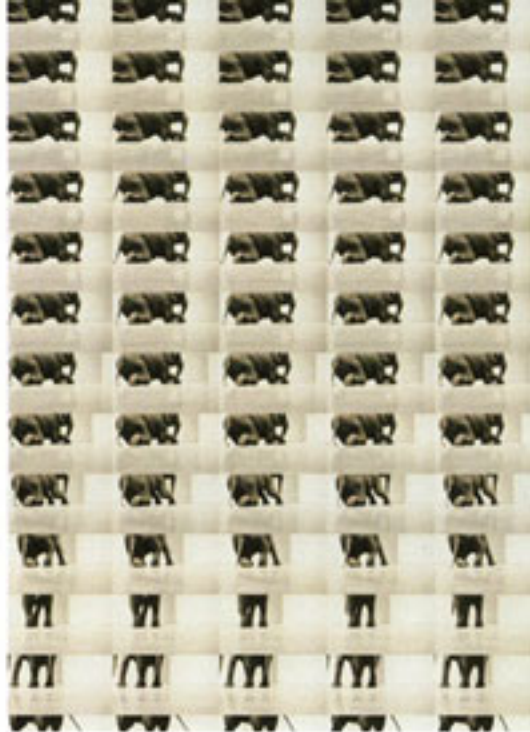
## Edelman Leather

Space No. 1119A

Everybody loves flowers. Perennials, from Edelman Leather, comes in seven colorful flavors that can work together or separately, just as they do in the wild. Their bright, bouncy nature leaves the spirit and relief of spring in any interior. Edelman Leathers and Edelman floor tiles are GreenGuard certified.

[www.edelmanleather.com](http://www.edelmanleather.com)

Reader Service No. 234



## Maharam

Space No. 1168

Further expanding on an extensive array of museum-quality offerings, Maharam presents Digital Projects, a repository of works by emerging and established artists that can be applied on walls and other surfaces. It will also draw from the Maharam Design Studio, as well as the Textiles of the 20<sup>th</sup> Century series. The works will be printed with UV-resistant pigment based inks on a variety of substrates offering matte, gloss, and washable finishes. [www.maharam.com](http://www.maharam.com)

Reader Service No. 233

## Sutherland

Space No. 1800

The Prater Planter from Sutherland is a tall drink of water: one of many pieces in the Sutherland by Philippe Hurel outdoor furniture collection, the planter is

constructed of natural teak wood. The line is rounded out with stools; side and dining tables; arm, side, and lounge chairs; as well as an ottoman.

[www.sutherlandfurniture.com](http://www.sutherlandfurniture.com)

Reader Service No. 235

